



*The Measure of Quality.*

# Setting a **new standard** in **corrugated anilox** and **glue-set solutions.**

## Introducing **three** **innovations** to boost **your** performance:



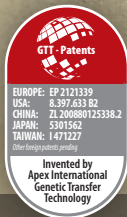
**GLUE SET  
PRECISION & DURABILITY:  
TOGETHER AT LAST.**



**CONVENTIONAL ANILOX.  
UNCONVENTIONAL QUALITY.**  
HIGH-DEFINITION, HIGH-QUALITY PROCESS JOBS AND ULTRA-FINE LINE-WORK



**THE FUTURE OF ANILOX  
BEGINS TODAY WITH GTT.**



# The new standard in Glue

GLUE SETS



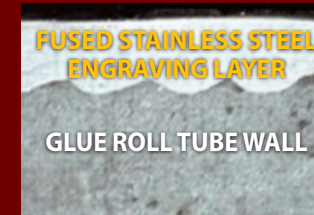
**Stainless Steel Glue Rolls & Ceramic Doctor Rolls**

## Industry leading precision & life expectancy.

FEATURES

- ADVANCED METALLURGY** Gone are short-lived conventional chrome and copper compositions;
- STAINLESS STEEL GLUE ROLLS** AST stainless steel fusion manufacturing process (not simply build-up);
- CERAMIC DOCTOR ROLLS** Proprietary super-hard, black mirror-finish ceramic;
- PRECISION ENGRAVING** Mechanical knurling;
- HIGHPRECISION** Tightest T.I.R. & O.D. tolerances ensure the closest consistent gap possible;
- ADVANCED ENGRAVINGS** Standard & new engraving patterns including finer line screens.

*Accora Stainless Steel Fusion to Glue Roll*



*Corrosion-proof Accora multi-pass engraving*



BENEFITS

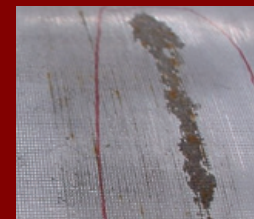
### ELIMINATES:

- Corrosion & Chrome Flaking
- Score Lines
- Warp, Curl & Washboarding
- High Starch Consumption
- Uneven Glue Transfer
- Improper Bonding

### PROMOTES:

- Faster Speeds
- Glue Cost Savings
- Easier Clean-up
- Job Repeatability
- Tightest T.I.R. & O.D.
- Longer Roll Life

*Look familiar? Typical flaking and corrosion on chrome-plated glue roll; scoring on doctor roll.*



## The Apex Difference.

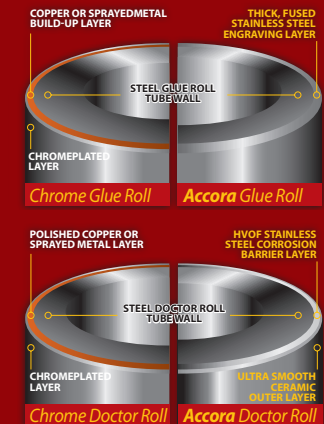
**A History of Consistency.** For over 25 years, Apex International has been committed to serving the printing industry through innovation. Now the world's largest anilox solutions provider offers these key benefits as part of our commitment to technical innovation and the development of the most consistent anilox solutions on the market today:

**Industry Partnerships.** There is a reason that the top suppliers in the printing industry have chosen to align with Apex on key research projects and trials. Our products make their products better!

**Technical Competence.** Engineers and industry tradesmen with decades of experience not only contribute to the development of our technologically advanced products, but they also stand ready to show you how to integrate state-of-the-art metering solutions into your process with on-site demonstrations and training. At Apex, we think globally while acting locally.

**Commitment to Research & Development.** No other anilox company invests more capital into the development of advancements in anilox technology.

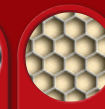
**Global Footprint.** With five production facilities on four continents and sales offices serving 80 countries across the globe Apex International has a superior understanding of global industry trends and technological advancements. And that knowledge is translated into every product we manufacture.



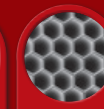
45°



POSITIVE REVERSE 45°



60° HEX



POSITIVE REVERSE 60°

# Set and Anilox solutions.



Ink Metering Rolls

## The Secret to Unparalleled Consistency Begins with GTT.

FEATURES

### OPEN SLALOM INK CHANNEL GEOMETRY

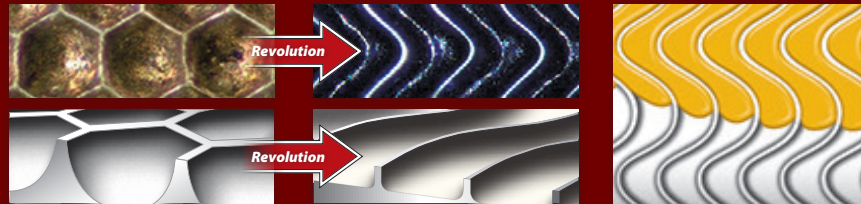
Ink flows uniformly and calmly onto plate;

### SUPERHARD HYBRID CERAMIC

High-density, low-porosity Cr2O3-TiO2 ceramic

### CONSTANT BEAM LASER ENGRAVING

Delivers smooth, hard and precise channel walls.



Deep conventional anilox cells trap ink while cell wall surface mass reduces ink area, thus inhibiting reliable ink replenishment.

GTT channels are up to 30% shallower and land mass is reduced by more than 60% for greater ink transfer surface area and replenishment.

GTT slalom channels reduce ink stress at the doctoring phase for a more controlled ink-to-plate transfer.

BENEFITS

### IMPROVED PRINTABILITY

Print stronger solids with less mottling & pinholing; sharper and finer type; tighter reverses; finer, cleaner plate screens, less dot gain;

### ENHANCED REPEATABILITY

Job after job, year after year, GTT delivers predictable and repeatable print results;

### GREATER PROFITABILITY

Let GTT boost your bottom line with savings in time and better print quality.

Full solid and 65 LPI screen in one print plate on white-coated B-flute



GTT CORR "L"



CONVENTIONAL



UltraCell+ Anilox Rolls

## Conventional anilox. Unconventional quality.

FEATURES

**ADVANCED GEOMETRY** UltraCell+ cell shallow-profile geometry;

**HVOF LOW-POROSITY CERAMIC** High-density, low-porosity;

**INNOVATIVE LASER PROCESS** UltraMelt Multi-phase laser engraving;

**CORROSION BARRIER** Thick, impermeable protective layer;

**QUALITY CONTROL** Rigorous Laser Interferometric Cell-Volume Verification for every roll.

Apex is your one-stop shop for all anilox engravings.



BENEFITS

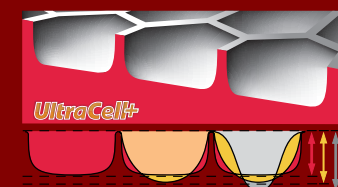
**PRINTING PRECISION** Improved Solid, Fine-Line and Process Printability;

**VALUE** Greater Ink Release, Faster Clean-Up;

**INKING EFFICIENCY** Low-porosity Ceramic and shallow Geometry enable more complete and consistent ink release to plate;

**DURABILITY** Increased Score Resistance and Corrosion Resistance.

UltraCell+:  
15% to 30% less depth  
than CO<sub>2</sub> at  
equal volume.



Let us prove it by visiting [discover.apex-groupofcompanies.com/aaa](https://discover.apex-groupofcompanies.com/aaa) to schedule your free, on-site appraisal.

# Five secrets every corrugated professional should know about Apex.

## 1 What can GTT<sup>CORR</sup> do for me?

GTT<sup>CORR</sup> is Apex's patented successor to conventional anilox rolls. A brand new *Open Slalom Ink Channel* geometry allows ink to precisely and uniformly flow onto printing plate.

In other words, print more - with less. Turbocharge your presses and realize immediate benefits. In three key categories of corrugated printing, GTT<sup>CORR</sup> outshines conventional anilox engravings:



**PRINTABILITY** Whether solids, screens or linework, GTT<sup>CORR</sup> can reduce or eliminate mottling, pinholing, haloing and dot gain while delivering stronger and denser solids, and crisper and finer type and lines - often on the same ink station;

**DOWNTIME** Imagine faster cleanup - and far fewer deep cleanings; imagine slashing make-ready time on plate changes and registration since one GTT<sup>CORR</sup> roll can achieve solid and screen combo jobs;

**PROFITABILITY** Would you like to run your press faster, do more on a single station, spend less on ink, enjoy longer roll lifespan, and suffer fewer printing rejects? See if GTT<sup>CORR</sup> can help your bottom line.

## 2 What can UltraCell+ anilox do for me?

UltraCell+ cell geometries are wider and shallower than C0, and conventional YAG laser-engraved rolls - up to 30% shallower.

Combined with UltraCell's unrivaled cell precision and ultra low-porosity ceramic, our innovations deliver these benefits:



- Finer line screens without ink upgrades;
- More thorough and precise ink release from anilox to plate - with less cell plugging/clogging;
- Faster and easier clean-up with less blade wear;
- Better protection against harsh cleaners and contaminants.

## 3 What can Accora glue sets do for me?

Finally, accurate glue sets that deliver just the right amount of glue - job after job. New metallurgy and precision manufacture give you a corrugating edge. Accora is built tough for longer roll life - and built smart to help save on glue costs.



Here's how Accora stacks up against traditional glue sets:

- NEW METALLURGY** Gone are short-lived conventional chrome and copper compositions;
- STAINLESS STEEL GLUE ROLLS** AST stainless steel fusion process;
- CERAMIC DOCTOR ROLLS** Proprietary super-hard, low-porosity black mirror-finish ceramic;
- ADVANCED ENGRAVINGS** Standard & new engraving patterns - including finer line screens;
- HIGH-PRECISION** Tighter T.I.R. & O.D. tolerances ensure closest consistent gap.

## 4 What is the Apex Total Quality Commitment?

Apex stands firmly behind all our products and services and guarantees customer satisfaction. Quality isn't our goal, it's our requirement. Our dedication is evident in these accomplishments:

- Multi-point 3D laser interferometric quality control/assurance for every single anilox/GTT roll;
- Design, development and deployment of absolute state-of-the-art laser engraving technology and finishing machinery;
- Manufacture with only the finest-quality metallurgy: ceramics, stainless steel, nickel and hybrids.

## 5 Why is Apex the first choice in corrugated anilox and glue sets?

Because Apex speaks corrugated - fluently. **Global presence?** In over 80 countries, Apex delivers superior quality and service to a fast-growing customer base. **Innovation?** Not only did Apex pioneer the original 60° hexcell engraving and patent the revolutionary GTT engraving, but also enabled high-performance flexo through advances in laser technology, ceramics and metallurgy. **Quality?** From materials to manufacturing processes, Apex continues to set the standards in anilox and glue set performance, know-how and service.

## About Apex International

Headquartered in the Netherlands, Apex International is the world's leading manufacturer of precision ink- and glue-transfer technology products including anilox and metering rolls for corrugated, flexible packaging, label, offset, and industrial coating applications.

Apex anilox products are tested, approved and deployed by all leading flexo press and corrugating machine manufacturers. Reliability, durability and precision are hallmarks of all Apex products, with continual innovation a core value within the global Apex organization.

Together with printing industry partners, Apex delivers powerful competitive advantages to our customers. Apex products truly embody the Measure of Quality.

With manufacturing and sales operations in more than 80 countries, Apex provides added value by supplying customers with end-to-end anilox, GTT and glue-set solutions including measurement devices, cleaning and maintenance products, and educational/use-and-care seminars. Someone from Apex is always close by to personally attend to customer needs. For more information, contact the Apex Corrugated team at [info@apex-europe.com](mailto:info@apex-europe.com)



[www.apex-groupofcompanies.com](http://www.apex-groupofcompanies.com)

*The Measure of Quality.*

**APEX NORTH AMERICA**  
65 Washington Street  
Donora, PA 15033-1391 USA  
T 866-APEX-USA (866 273 9872)  
E [info@apexnorthamerica.com](mailto:info@apexnorthamerica.com)

**APEX LATIN AMERICA**  
Rodovia PR-090 n°13601  
Campo Magro, Paraná CEP 83535-000 BR  
T +55 (41) 3677 2678  
E [info@apexlatinamerica.com](mailto:info@apexlatinamerica.com)

**APEX EUROPE**  
Metaalweg 8  
5527 AK Hapert NL  
T +31 (0) 497 36 11 11  
E [info@apex-europe.com](mailto:info@apex-europe.com)

**APEX ITALY**  
Via Pietro Nenni, snc  
21057 Olgiate Olona (VA) IT  
T +39 (0) 331 37 90 63  
E [info@apex-italy.it](mailto:info@apex-italy.it)

**GLOBAL SALES OFFICES**  
T +65 (0) 6284 7606  
E [apexasia@singnet.com.sg](mailto:apexasia@singnet.com.sg)

**APEX FRANCE**  
T +33 (0) 475 463 942  
E [france@apex-europe.com](mailto:france@apex-europe.com)

**APEX DEUTSCHLAND**  
T +49 (0) 2823 929 360  
E [info@apex-deutschland.de](mailto:info@apex-deutschland.de)

**APEX IBÉRICA**  
T +34 93 583 10 12  
E [spain@apex-europe.com](mailto:spain@apex-europe.com)

**APEX UK**  
T +44 (0) 1618 250 338  
E [uk@apex-europe.com](mailto:uk@apex-europe.com)